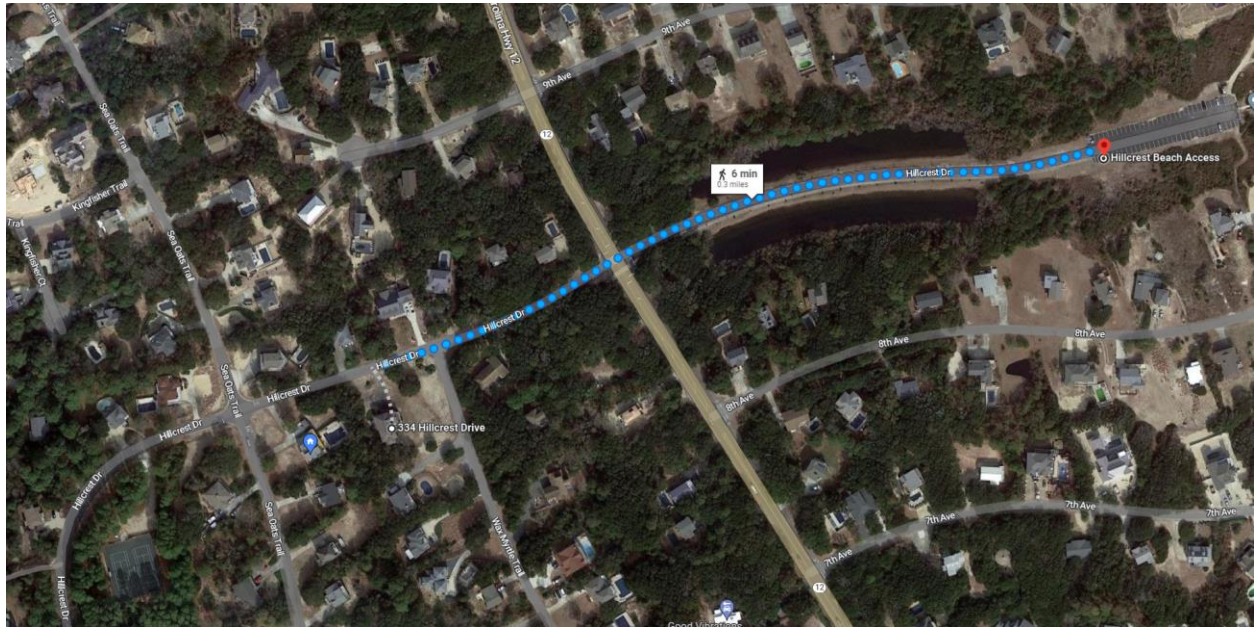


A Perfect Location Beach Access

The closest beach access is at the east end of Hillcrest Drive. It's only a quarter mile away! To get there, you simply take a right out of the driveway and walk, drive, or bike down the hill. The crossover is beyond the traffic light at the far end of the parking lot. If you're driving, keep in mind that this is a private parking lot owned by the Southern Shores Civic Association; you have been provided parking passes. Towing is enforced.



The beach access has open showers and portable toilet facilities. There is also a volleyball court.